

cofundí

fundición de aluminio

Your quality is our priority



ABOUT US

We provide our customers with a finished product ready for assembly or use. Our core competencies include:

- **Mold and tooling manufacturing**
- **Casting**
 - Die casting by gravity
 - Sand casting
- **Finishing**
 - Deburring and sanding
 - Shot blasting
- **Quality Controls**
 - Fluoroscopy / Radioscopy
 - 3D Measurement
 - Non Destructive Testing
- **Heat Treatment**
- **Machining**

EXPORTS

We have been supplying aluminum parts for more than **25 years**, meeting **high quality** standards for a wide variety of markets around the world.



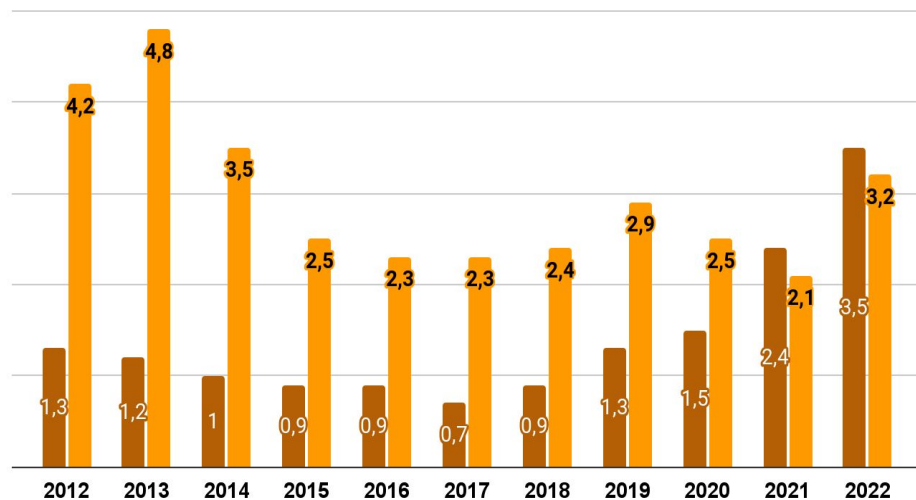
Our **International** sales team is available in four main languages: English, Spanish, German and French.

OUR EXPORT PERFORMANCE

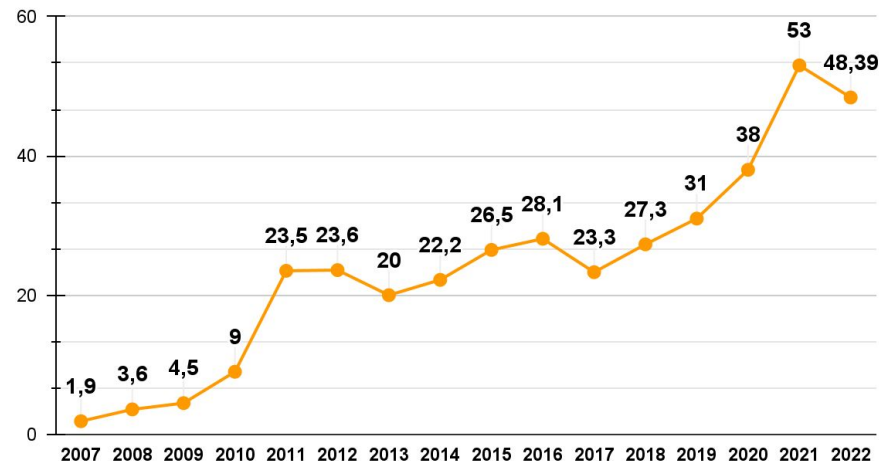
Cofundi focuses on the medium-low range of high added value products. In the past few years, we have strengthened our commercial strategy based on exports.

EXPORT PERFORMANCE (MILL. €)

■ *Export invoicing* ■ *Domestic Invoicing*

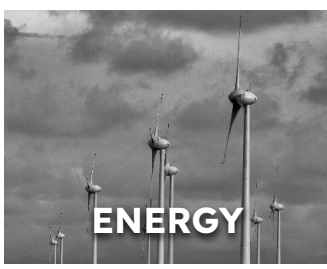


EXPORT PERFORMANCE (%)



INDUSTRIES WE WORK WITH

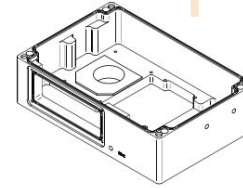
cofundi



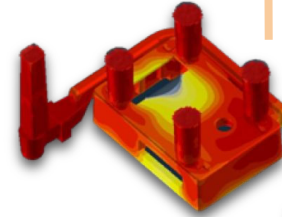
1. TECHNICAL OFFICE

for mold and tooling manufacturing

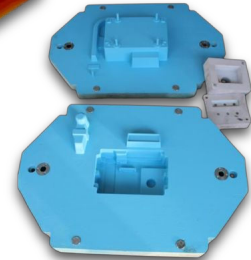
3D Design of the part with *3D SOLIDWORKS*



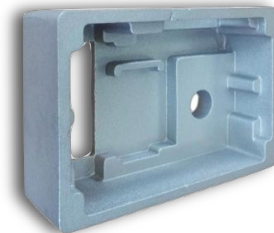
Cast simulation with QuikCAST



Mold manufacturing



Homologation of the part



2.ALUMINUM CASTING

Methods



Shell/Permanent mold
Medium-long batch
< 60 kg
< 2.000 parts/month
Max. 40 Tn/month



Semi-automatic molding
Medium-short batch
< 30 kg
< 1000 parts/month
Max. 50 Tn/month



Manual molding
Short batch
< 3.800 kg
< 500 parts/month
Max. 30 Tn/month

2.MEANS OF PRODUCTION

2.1.DIE CASTING

- 3 gas fusion furnaces (1,500 kg)
- 5 electric heat preserving furnaces (250-500 kg)
- Automatic degassing system
- 8 horizontal molding machines
- 5 vertical machines
- 5 ≥ 3 axis machines Robotized casting island
- Storage, tool preparation, maintenance and cleaning areas

INFO: Production of medium and long batches (200 to 300 parts/month), weighing between 0.05 and 60 kg.



2.MEANS OF PRODUCTION

2.2.GREEN SAND

- Tilting furnace- 800 kg
- Automated fusion process: Integrated Robotic Arm (ABB)
- Automated fusion process: Fusing and heat preserving furnace.
- Automatic sand recovery system
- Higrometer check the sand's humidity
- Carousel for up to 750 boxes per day

INFO: Production of medium and short batches (100 to 1000 parts/ month) , weighing between 0.3 and 30 kg.



2.MEANS OF PRODUCTION

2.3.CHEMICAL MANUAL MOLDING

- 4 gas fusing furnaces (2.800 kg)
- 2 mixing machines: 20 y 7 t/hour
- Automatic sand recovery system: 5t/hour
- Instalación de machería manual para machos grandes
- Installation of manual foundry cores for bigger cores.
- Machines for the production of automatic foundry core boxes (600x500)
- Storing area

INFO: Production of short batches (100 parts/month), weighing between 0.05 and 3870 kg.

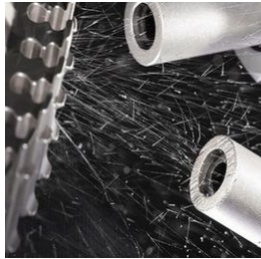


3.FINISHING FACILITY

After the part has solidified, it is necessary to eliminate the feeding channels as well as to work on its finishing. At Cofundi we perform the following processes:



Deburring: the fillers and feeding channel must be removed, then the surface is cleaned



Shot Blasting: with Steel ball or sand blasting



Automated deburring with ABB robot: with artificial vision



Heat treatment: specific for aluminium



Final checking and documentation & certificate generation



Subcontratation of any special surface finishing

3.1. Our Finishing Processes



Deburring



Heat Treatment



Shot Blasting



Deburring robot



Sanding



Machining

4.MACHINING

- Leakage test up to 6 BAR
- Three-Dimensional Control-
DEA MISTRAL
- Laser Machine
- Washer



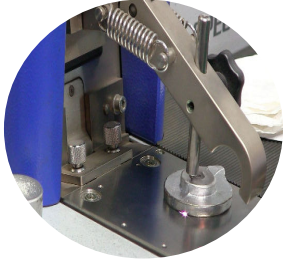
4.MACHINING



1. MATSUURA H.PLUS 300 500X500X500
2. MATSUURA H.PLUS 405 650X650X650
3. LATHE DOSSAN PUMA 2600
4. ENSHU JB80S 800X800X800
5. LATHE HYUNDAI SKT15
6. JOHNFORD VMC 1600S 1500X1000X800
7. QUASER HX805 1200X1100X1500kg



5.MEANS OF CONTROL



Spectrometer



Degass machines
and vacuum glass



Sand status
check



XRay machine by
digital fluoroscopy



Tensile test
machine



Thickness
measure machine



3D Arm
Measurement

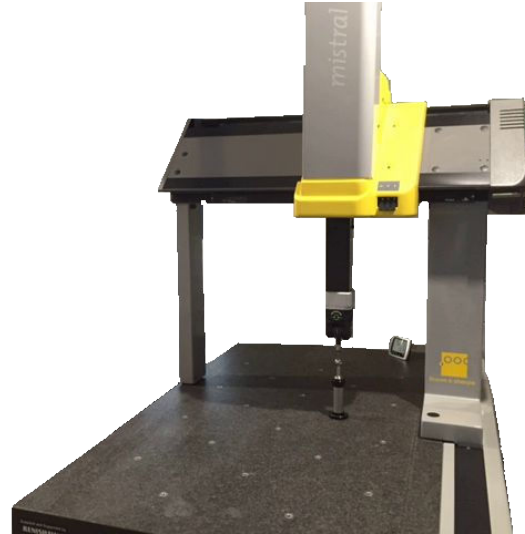


Brinell hardness
measure machine

5.1.MEANS OF CONTROL: MEASURING



Profilometer



**Three-dimensional control
with Renishaw for
Machining**

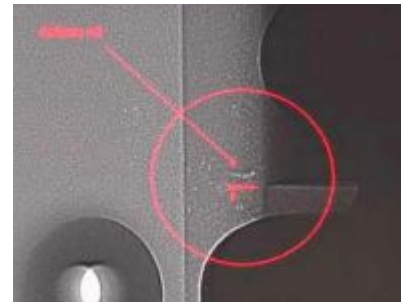
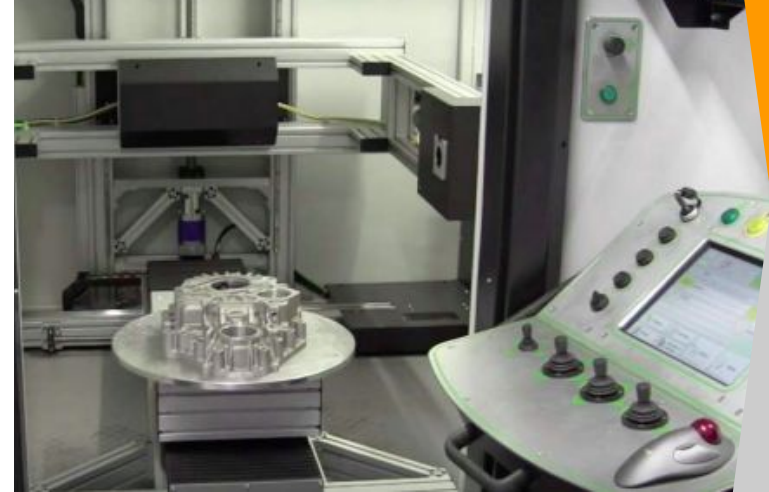


**3D Arm Measurement
(FARO arm) with laser
device for Casting.**

5.2.MEANS OF CONTROL: RX CONTROL MACHINE

Using Radioscopy we achieve:

- Detection of **internal defects** (porosities, cracks, cavities, etc)
- Image screenshots
- Measurement of defects
- Maximum capacity of:
 - 120kg
 - Dimensions 750mmx1200mm



6.ERP AND QUALITY CERTIFICATES

- COFUNDI operates under the quality standard **ISO 9001:2015** certified by Lloyds Register since 2003.
- All production and management activities are integrated and administered within our **ERP**.
- **ABS Marine Industry Certifications**
- Full control of the manufacturing parameters and procedures:

**Production
Order**

Operations and
parameters

**Technical
Sheet**

Visual
description of
the process

**Control
Guidelines**

Controls to be
performed and
recorded



AERONAUTICAL

cofundi



**AIRBUS
pilot/co-pilot
armrest**



Electronic case



**Airbus wing forming
tooling: 4m X 3m (1,1 Tn)**



**Airbus section tooling:
6m (3.8 Tn)**

References

AUTOMOTIVE

cofundi



Sports car case



Supporter



**Spacer and engine
supporter**



Engine Supporter



Supporter

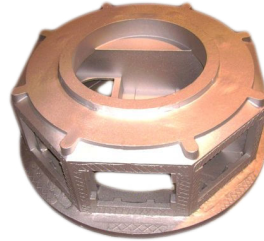
References

DEFENSE

cofundi



**Base for Rotating
System**



**Cannon base for Royal
Navy**



**Defense Vehicle
Cover**



**Defense Vehicle
Case**



**Pizarro guide
cradle**

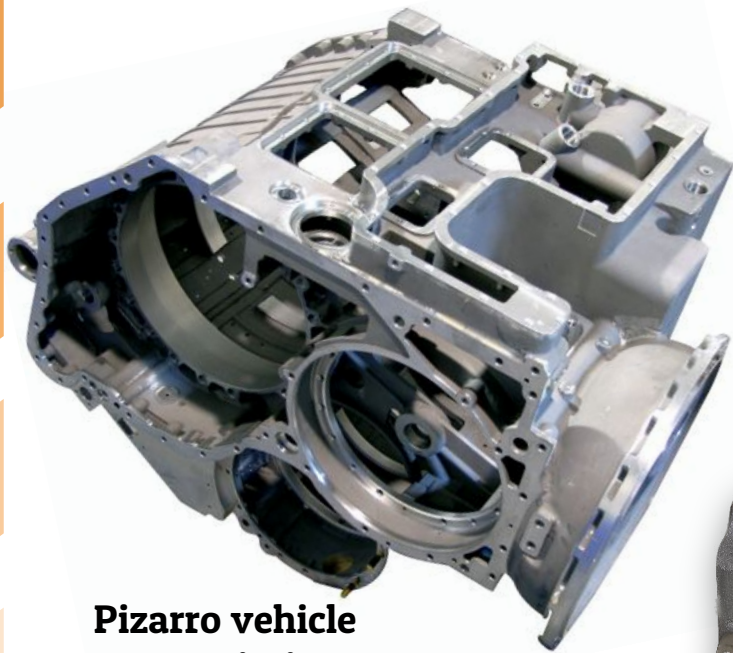


**Pizarro vehicle oil
filter holder**

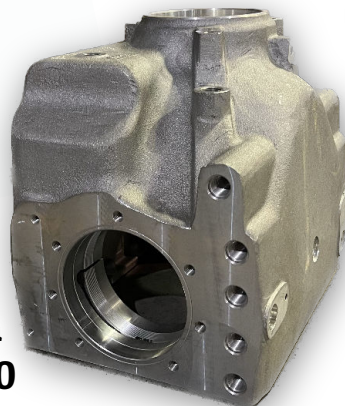
References

DEFENSE

cofundi



**Pizarro vehicle
transmission
casing**



**Transmission
casing for T750**



**Covers and closures for
Pizarro vehicle
transmissions**

References

DEFENSE



**Trigger subsystem
for Mirage**

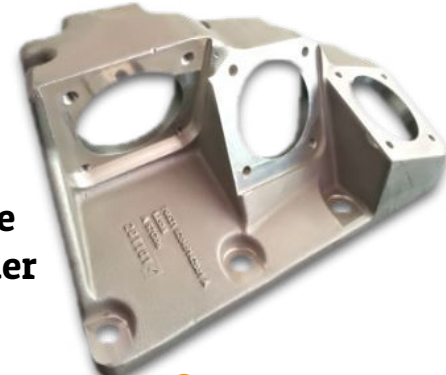


**Bases for military
radar**



Cannon holder

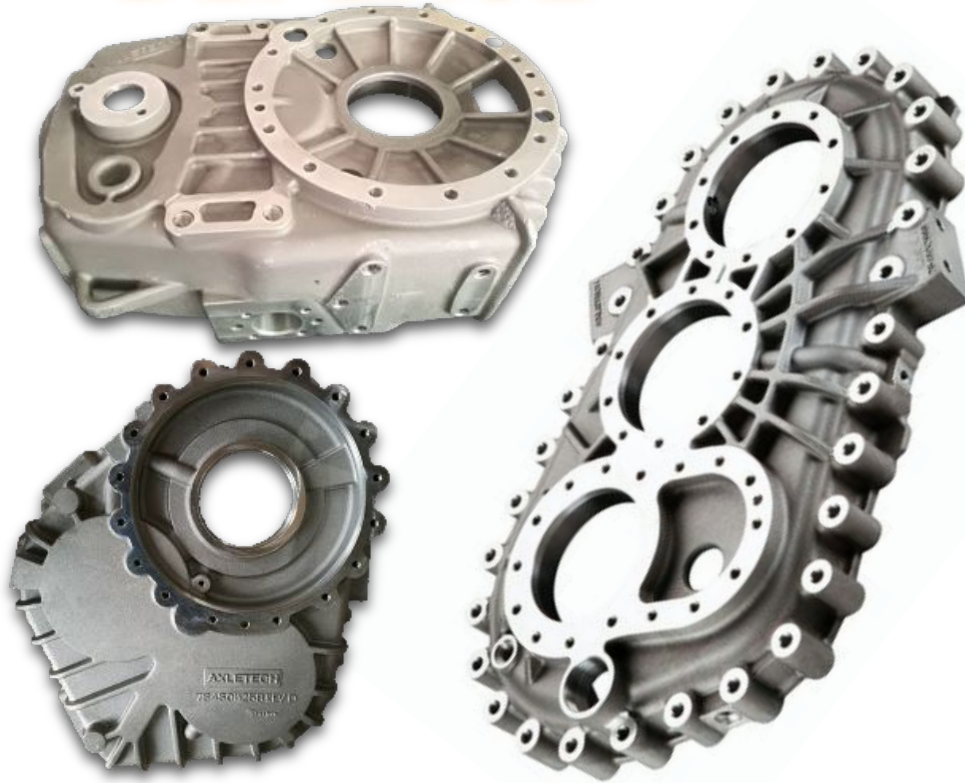
**GALIX
camouflage
system holder**



References

DEFENSE

cofundi



Defense vehicle
cases

Soporte óptico



References

ENERGY

cofundi



**Connectors for
electrical substations**



Power transmitters



Cover



Supporter



Gyroscopic Virola

References



References

LARGE VEHICLES

cofundi

**Agricultural vehicle
cases**



Transmission system



Electric bus cases



**Emission Reduction
System (EGRs)**

References

MACHINERY

cofundi

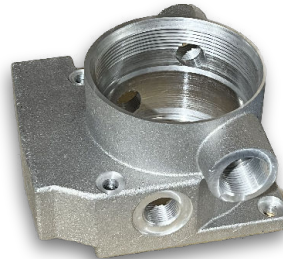


Compressor pistons



Case

**Pneumatic
cylinder cover**



Monoblock Burners

References

MARINE

cofundi



**Oil Storage and Compensation
Tanks**

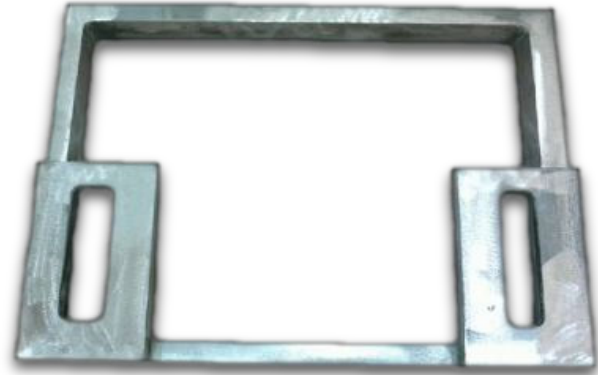
References

MARINE

cofundi



Vibration damping ring



**Frigate
communications
terminal**



**Inertia
brake/vibration
reduction CAT**



References

MEDICINE

cofundi



RX Machine Arm



RX Machine Arms

References

URBAN FURNITURE

cofundi



Simple Arm



Elbow



Streetlight Base



Single Arm

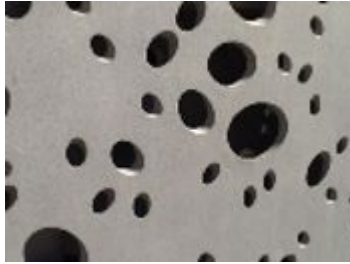


1.2 m Arm

References

PUBLIC WORKS

cofundi



**Facade of the San
Telmo Museum**



**Shelter for the
RABAT Tram**



References

PUBLIC WORKS

cofundi

Atocha Subway Station


tiendas
de la estación

Hertz

Por su seguridad trabajamos desde la oficina
del parking P3 donde le atenderemos.
Teléfono de contacto 610 100 157
For your safety we work from the office
from the P3 parking where we will assist you.
Contact phone 610 100 157



References

PROTOTYPES



Automotive Turbo Prototypes

VENTILATION

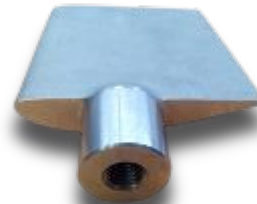
cofundi



**Blades for Public
Infrastructures**



Blades for Machinery



Mining Runners

References

Contact us: +34 946 155 264

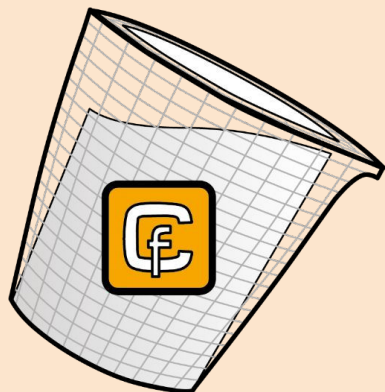
cofundi

 info@cofundi.com

Visit us online at www.cofundi.com



**Address: Avenida Pinoa 12,
48170, Zamudio, Spain.**



cofundi

f u n d i c i o n d e a l u m i n i o